



BETALIGHT

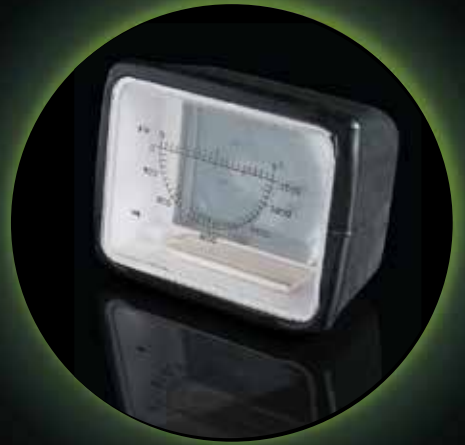
when reliability really counts

Map Reader

Self-Luminous Map Readers provide a secure and effective means for map illumination and magnification in darkness, without affecting night vision.

Key Features

- White light preserves map legend colours.
- Solid lens prevents ingress of moisture and condensation.
- Betalight luminance maintains night vision.
- Images are magnified X 1.5.
- Options for clear or calibration in degrees, milliradians etc...
- Range of NATO Stock Numbers.
- No batteries, bulbs or maintenance required.
- Lightweight and compact.
- Absolute reliability in all environmental conditions.



Performance

White light is selected as standard and is highly recommended to preserve coloured legend. (Green light prevents differentiation of coloured legend). Map Readers are available with either two or four Betalights, each 600 μ L brightness, depending on customer preference. Both versions enable maps to be read with clarity in twilight and darkness. Positioning of the lamps at the base of the unit increases security. The solid lens is a key feature in preventing ingress of moisture and accumulation of condensation over time in adverse environmental conditions. Light output is not affected by temperature, humidity, altitude or operational plane.

Typical Applications

- All military map reading applications, particularly in adverse climatic conditions and where security in forward areas is vital
- As an artillery and armoured vehicle manoeuvres aid

Operation

Map Readers are self-illuminating, requiring no batteries or secondary light source. They are suitable for use in hazardous atmospheres and will continue to operate normally in adverse environmental conditions, even when immersed in water. Rated for operation in temperatures between -60°C and +70°C.

BETALIGHT B.V.

T 0031 341 360111

F 0031 341 361238

E info@betalight.nl

I www.betalight.nl



BETALIGHT

when reliability really counts

Illumination

Illumination is provided by Betalights® fixed securely within the unit. SRB Technologies is the original developer of Betalights®, innovative technology that uses gaseous tritium activation of phosphor within a sealed borosilicate glass tube to produce light. Betalights® are self-luminous light sources that provide absolute reliability throughout their service life. They contain no moving parts and are maintenance-free. As the Map Reader is continuously illuminated, an on-off switch is not required.



Materials

The solid lens and scale panel are fixed and sealed securely within a tough polycarbonate inner housing. A black rubber outer sleeve provides additional robust protection.

Physical Characteristics

Length: 85mm
Width: 65mm
Depth: 50mm
Weight: 200gm

Quality Assurance

SRB Technologies are certified to ISO 9001 and meet the requirements of UK Ministry of Defence Standard 62/4 Issue 4..

BETALIGHT B.V.

T 0031 341 360111

F 0031 341 361238

E info@betalight.nl

I www.betalight.nl